



Date: 2/1/09

Supersedes: New

TECHNICAL DATA SHEET

VOONER TWO STAGE LIQUID RING VACUUM PUMP

Specified, constructed, tested, and guaranteed by:

Vooner FloGard® Corporation

P.O. Box 240360, Charlotte, NC 28224-0360
4729 Stockholm Court, Charlotte, NC 28273

Telephone: (704) 552-9314
Toll Free: 1-800-345-7879
Telefax: (704) 554-8230

Model: VTS10

Type: Two rotors, cone shape ports, liquid ring vacuum pump

Sealing liquid flow rate nominal: 25-35 gpm (95-130 lpm)
Sealing liquid connection: 1" NPT
Shaft sealing: Packing
Bearing design: Double row spherical roller bearing, external, grease lubricated, Type: NSK 22315EAE4/22317EAE4
Shaft diameter, drive end: 2¾"
Pump flange connections: 6" inlet, 5" outlet
Approximate pump weight: 2,390 lbs. (1,084 kg)

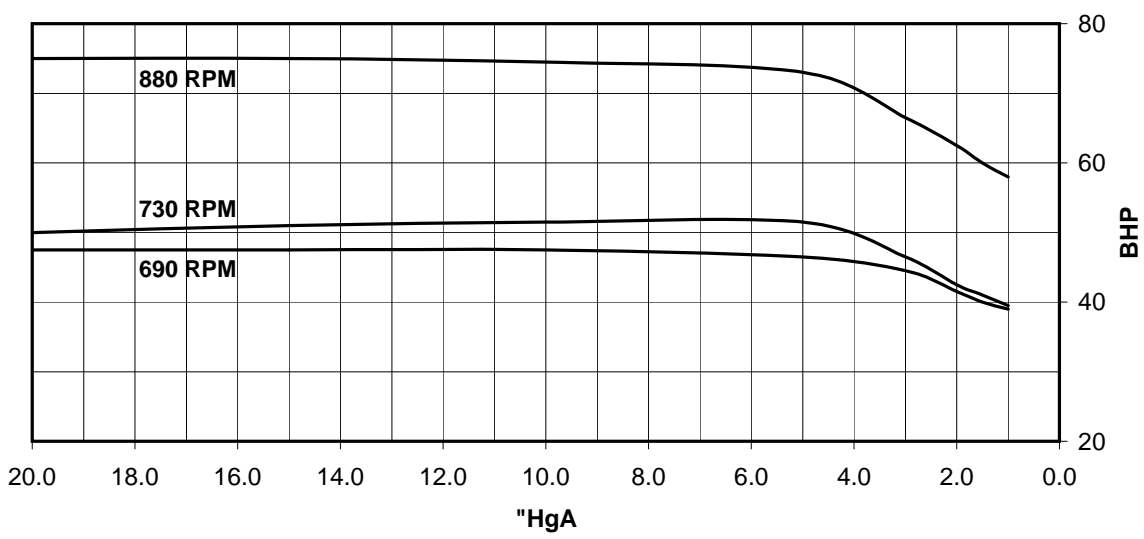
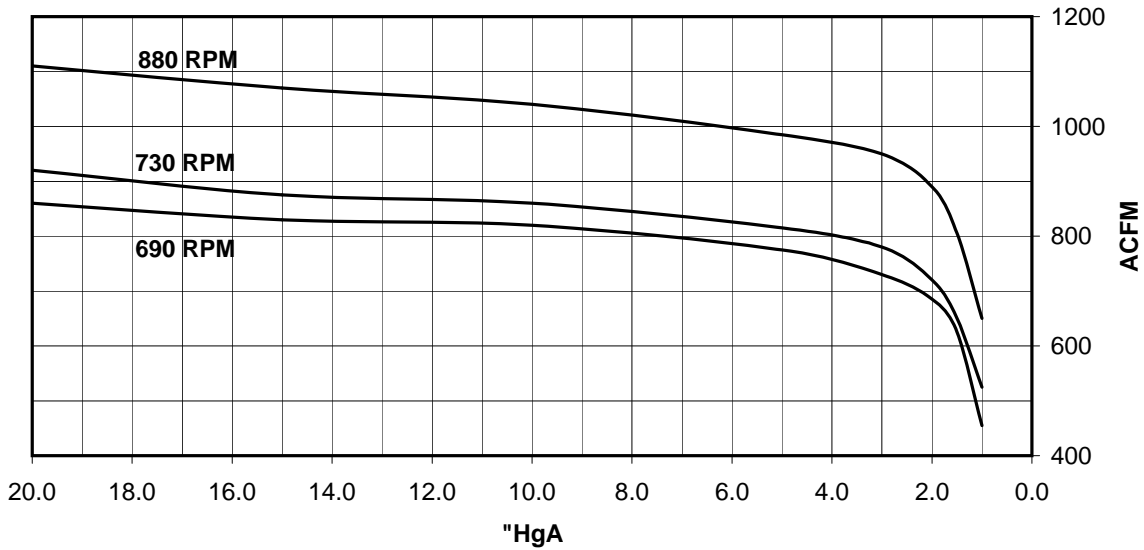
MATERIAL CONSTRUCTION FEATURES

Model	Rotors	Cones	Heads	Bearing Carrier	Housing	Shaft	Packing Gland, Studs, Nuts
A	Ductile Iron	Cast Iron	Cast Iron	Carbon Steel	Cast Iron	Carbon Steel	316 SS
K	304 SS	Cast Iron	Cast Iron	Carbon Steel	Cast Iron	Carbon Steel	316 SS

(SS - cast stainless steel)



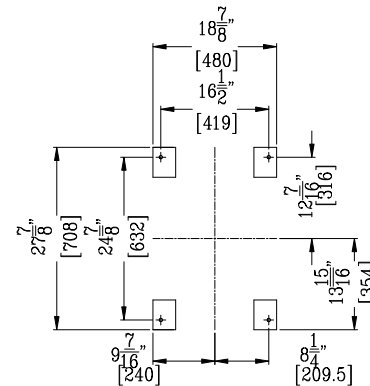
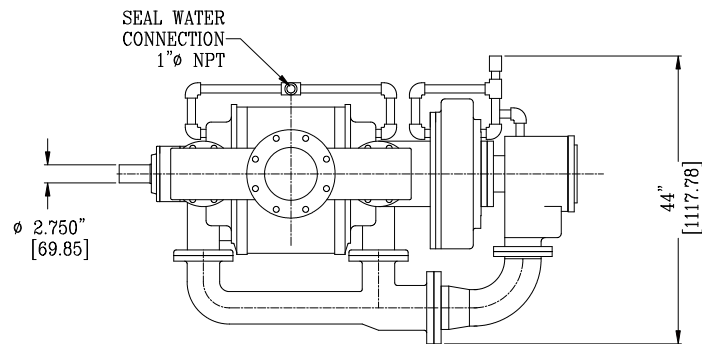
**Vooner®
VTS10 Two Stage
Conical Port Liquid Ring Vacuum Pump**



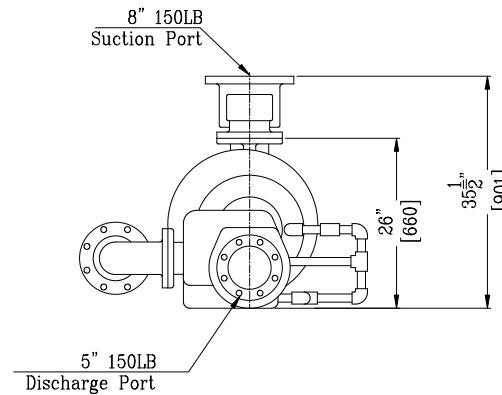
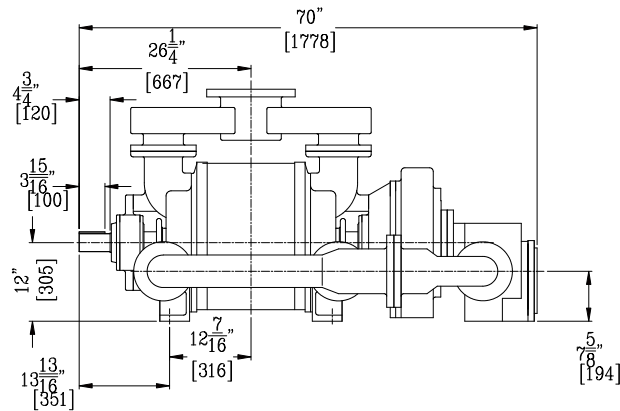
TEST DATA CONDITIONS
 INLET GAS TEMPERATURE: 60 F @ 50% RELATIVE HUMIDITY
 BAROMETRIC PRESSURE: 29.9" HG ABSOLUTE
 SEAL LIQUID TEMPERATURE: 60 F

Issued 8/22/2012

Performance to Heat Exchange Institute (HEI) Standards



PUMP FOOTING




GENERAL NOTES:

- 1) PRIMARY DIMENSIONS ARE IN INCHES. [mm]
- 2) FLANGES TO ANSI B16.5 CLASS 125
BOLT PATTERNS AND THICKNESS. BOLT
HOLES STRADDLE CENTER LINES.
- 3) PIPE THD. CONNECTIONS ARE ANSI B2.1.

APPROX. WEIGHTS LBS. [Kg]
PUMP ASSY - DRY 2390 [1084]

THIS DOCUMENT CONTAINS PROPRIETARY INFORMATION OF VOONER FLOGARD CORPORATION, CHARLOTTE, NC, 28273 U.S.A. WRITTEN PERMISSION MUST BE OBTAINED FROM VOONER FLOGARD CORPORATION TO DISCLOSE TO OTHERS ANY INFORMATION CONTAINED HEREON. THIS DOCUMENT, AND COPIES THEREOF, ARE SUBJECT TO IMMEDIATE RETURN TO VOONER FLOGARD CORPORATION ON REQUEST.

REV	NAME	DATE	DESCRIPTION
0	DWM	09/11/08	RELEASED FOR PUBLICATION
1	DWM	06/02/09	CHANGED SUCTION FROM 200A TO 8" AND DISCHARGE FROM 125A TO 5"



VOONER FLOGARD CORPORATION
 CHARLOTTE, NC 28273

OUTLINE DRAWING
VTS10

SIZE A	FSCM NO. NONE	DWG NO. VTS10	REV 1
------------------	-------------------------	-------------------------	-----------------

Scale: none

09/11/08

Sheet: 1 of 1