

SRA-5000™

SHOWER ACTUATOR/OSCILLATOR

High reliability and running throughout the world.

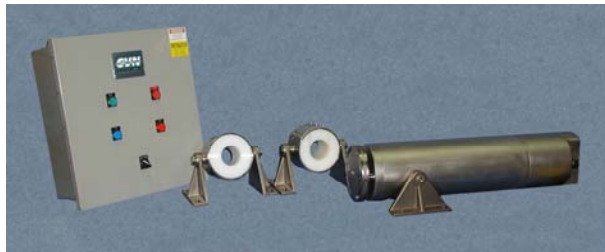
- Easy installation - in-line or parallel
- Can oscillate up to 12.7m , 500 inch wide shower
- Uses a low speed AC motor and planetary gear drive.
- “Ball Reverser” design is simple, no reversing switches, no need to reverse motor, instant turn around at end of stroke.
- Can run a range of fixed speed options without a control panel.
Speeds 25, 67, and 152 mm/min (50 HZ) - 1.15, 3.2, and 7.2 inches/min (60 Hz)
- Standard stroke lengths 127, 152, 203, 229, 254, and 305mm - 5, 6, 8, 9, 10, and 12 inches.
- Variable stroke speeds with your DCS or we can supply a control panel. 4-20 ma capability. Controllable speed range is 1.27 to 183 mm/min .05 to 7.2 inches/min.
- Internal proximity switch provides automatic felt/fabric protection
- SRA-5000™ drivers have a high reliability record
- 12 month warranty.

GENERAL

The **SRA-5000™ Actuator** is an industry standard in a series of highly specialized shower actuators optimized for their respective range of applications.

The oil lubricated “Ball-Reverser” design has three balls in tracks in a ball reverser screw. The actuator can develop 1000 lbs of thrust. Length of stroke is fixed as determined by the length of screw flights installed in the unit.

Split bearings with UHMW Polyethylene liners and anti-rotation bars keep the shower in correct position and allow removing the shower from the paper machine and replacing gain without realigning the bearings.



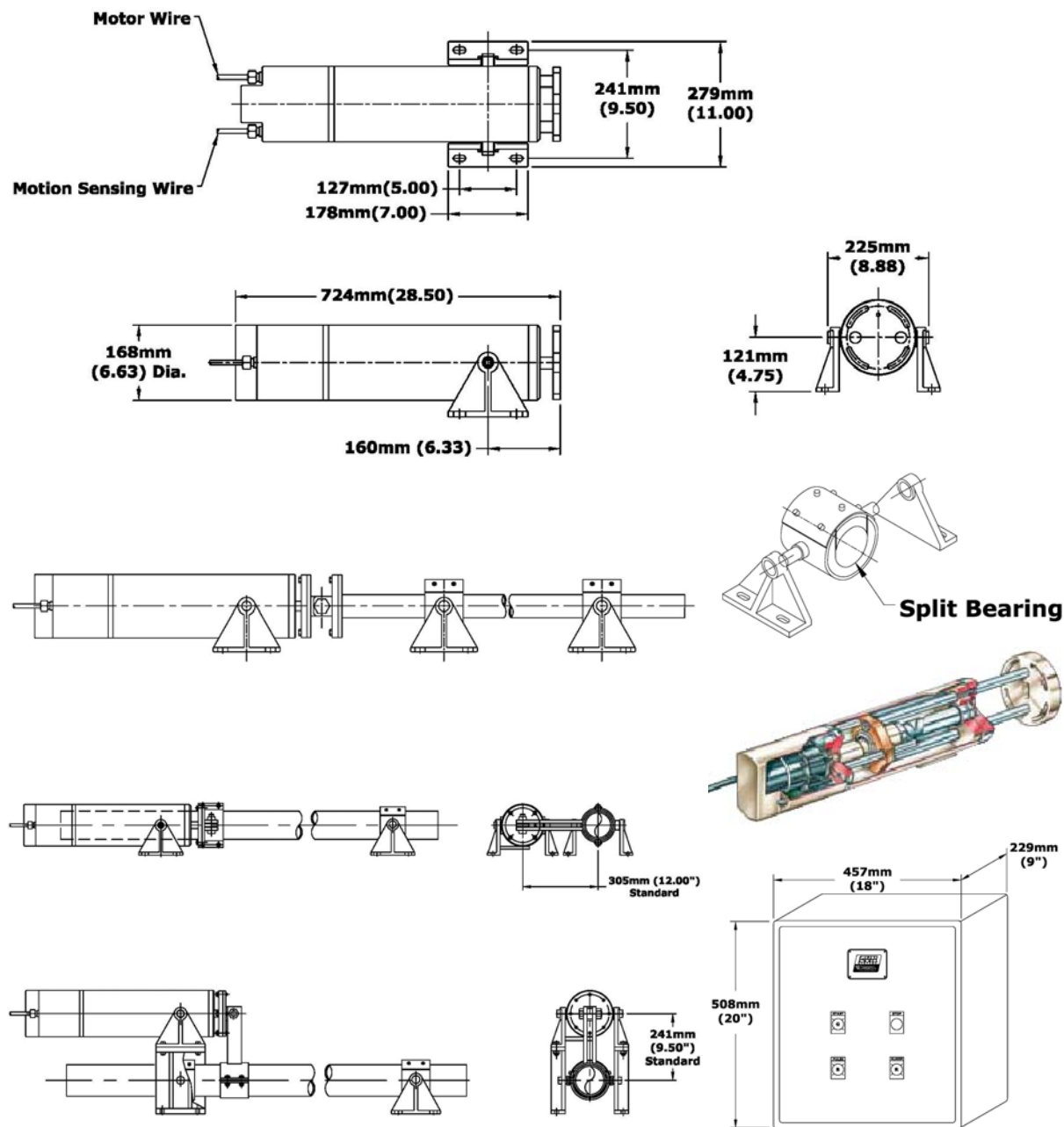
SRA-5000™ shower actuator, modeled on the original three ball reverser introduced in 1981. Industry standard of “Complete Coverage Cleaning”.

TECHNICAL DATA

Type	SRA-5000™ actuator for oscillating paper machine showers to achieve complete coverage cleaning.	Motor (Variable Speed)	0.025 horsepower (0.0186 kw) 220 VAC 3-phase , 0.3 amp. An integral gear box is attached for stroke rate. Gear box ratios 20:1
Manufacturer	Vooner Paper Machinery, Greenville, TN, USA	Motor (Variable Speed)	0.013 horsepower (0.0097 kw) 220 VAC 3-phase, 0.2 amp, Gear box ratios 125:1, 60:1, 45:1.
Wetted Parts	All wetted parts 316SS	Motion Sensing	24-volt DC. (optional 110VAC for DCS systems)
Lubrication	The SRA-5000™ actuator ships with oil and will not need lubrication during it's life.	Proximity Switch	Note two wires from motor housing, a motor lead and a proximity switch lead clearly marked as to how to connect. A separate power connection, 110 VAC, is needed for a panel board if used.
Maintenance	None	Weight	Actuator weight 135lbs. (61.2 kg) (without trunnions)
Control Panel	NEMA 4X, H - 20 inches (508 mm), W - 18 inches (457 mm), D - 9 inches (229 mm), door safety switch, material fiberglass. 110 VAC power supply, start/stop buttons, Three (3) lights: start, pulse, and alarm. 4-20 ma connections for DCS.	Noise	less than 80 decibels



DIMENSIONS AND MOUNTING



SERVICE

- Spare actuators, parts, and rebuild services are located in Greenville, Tennessee.
- Onsite technical service is available from Greenville, Tennessee.

